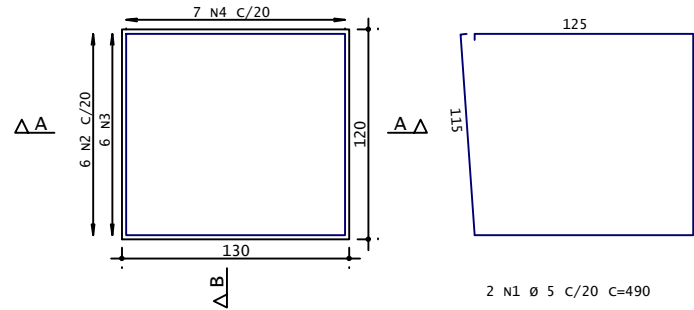


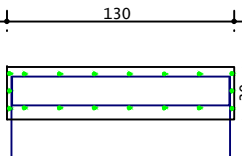
BASE BOMBA

(ESCALA 1:25)

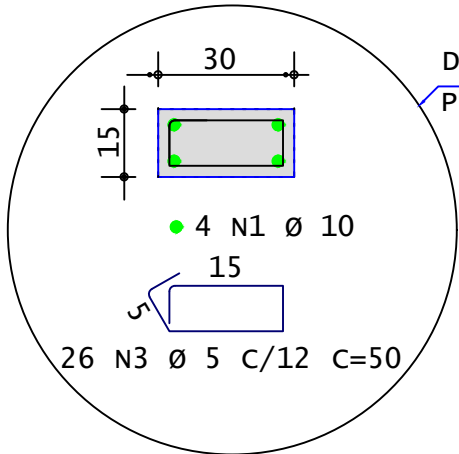
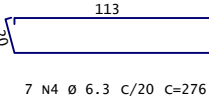
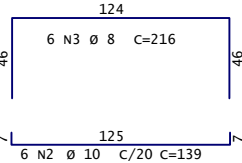
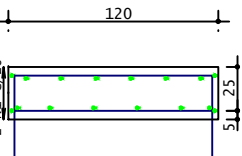
PLANTA



CORTE A - A

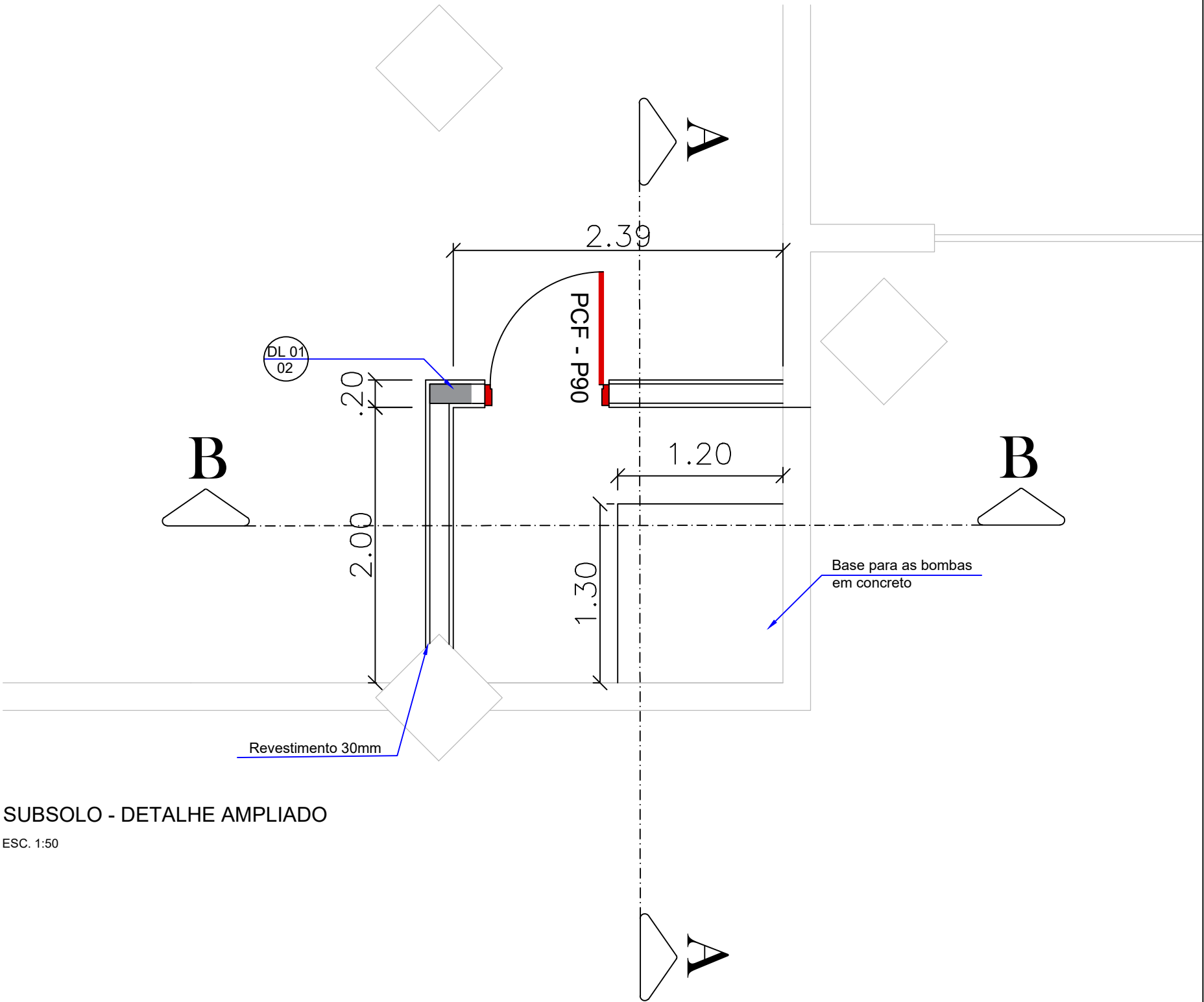


CORTE B - B



SUBSOLO - DETALHE AMPLIADO

ESC. 1:50



REFORMA E ADAPTAÇÃO DO PRÉDIO DA CÂMARA MUNICIPAL DE INDAIATUBA

Projeto Arquitetônico

Revisão

02

Data

26/11/2021

Modificado

Emissão Inicial



Responsável:

Eng. Sebastião Donizetti

Coordenador:

Desenhista:

Thales Stifter

Escala:

1:50

Arquiteto:

FLS. 01 COMP. ROFAN-OB. PE-EXECUTIVO-EST-REV.02

Título do Desenho (Pavimento e Assunto):

Executivo Estrutural

Endereço:

Rua Humaitá, 1167

Ciente:

Câmara de Vereadores

Arquiteto:

Eduardo Tumiaty

Prancha:

EST. 1 de 1

Local:

Pav. Subsolo

Revisão:

02